

Fugro Surveyor - shallow draft survey vessel

Affordable Near Shore Surveys Using Offshore Technology

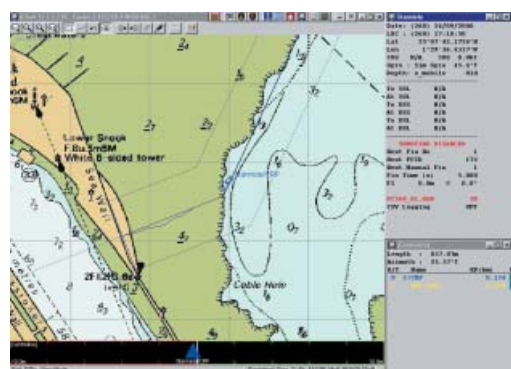
Fugro's near shore survey vessel "Fugro Surveyor" brings a new level of technology to support transition zone construction and survey projects. With access, on demand, to technical support and the full range of the latest equipment available from the Fugro Group, this vessel can be rapidly mobilised with a tailored suite of resources to precisely match the customers' needs. This approach results in a highly cost effective platform with exceptional versatility and, with access to Fugro's specialist staff, an extremely professional result.

Based on a proven catamaran design, the vessel is classified to MCA Class 2, enabling operations up to 20 miles from a point of safe haven. With its own trailer, "Fugro Surveyor" can be rapidly mobilised by road to any location within the UK mainland or by sea on a standard car ferry to Ireland or the Continent.

The vessel is capable of carrying a maximum of 4 personnel, enabling client representatives to monitor operations at first hand.



Vessels

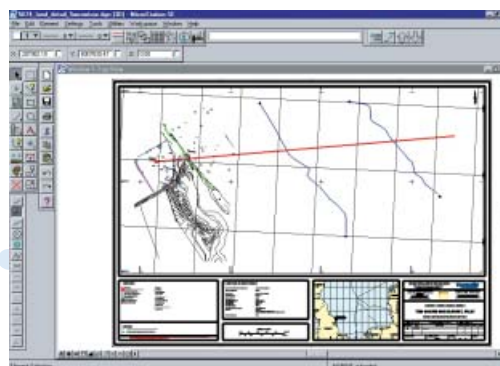


Positioning will be achieved using Fugro's state of the art StarFix DGPS systems and advanced integrated navigation package StarFix.NAV. A heading sensor and dual frequency single beam echo sounder completes the basic permanently fitted package, keeping running costs low.

Additional equipment for Geophysical, Swathe Bathymetric and Inspection surveys is installed using either towed, over the side or hull mounting techniques.

Data integrity will be checked in the field using Fugro's processing and mapping packages. Provisional charts can be produced whilst on site incorporating tidal and geophysical data.

Full processing of all raw data will be undertaken on completion of the contract, in accordance with client specifications, producing final charts up to A0 in size.



Near Shore Survey Operations

Vessel Details

Length: 7.90m
 Beam: 2.25 m
 Draft: 0.40m (Fully Loaded)
 Engine: Twin Honda 50Hp
 Power: 6 kVa 240V Generator
 UPS: 3 kVa (30 mins Full Load)
 Lifting Weight: 500kg

Standard Equipment

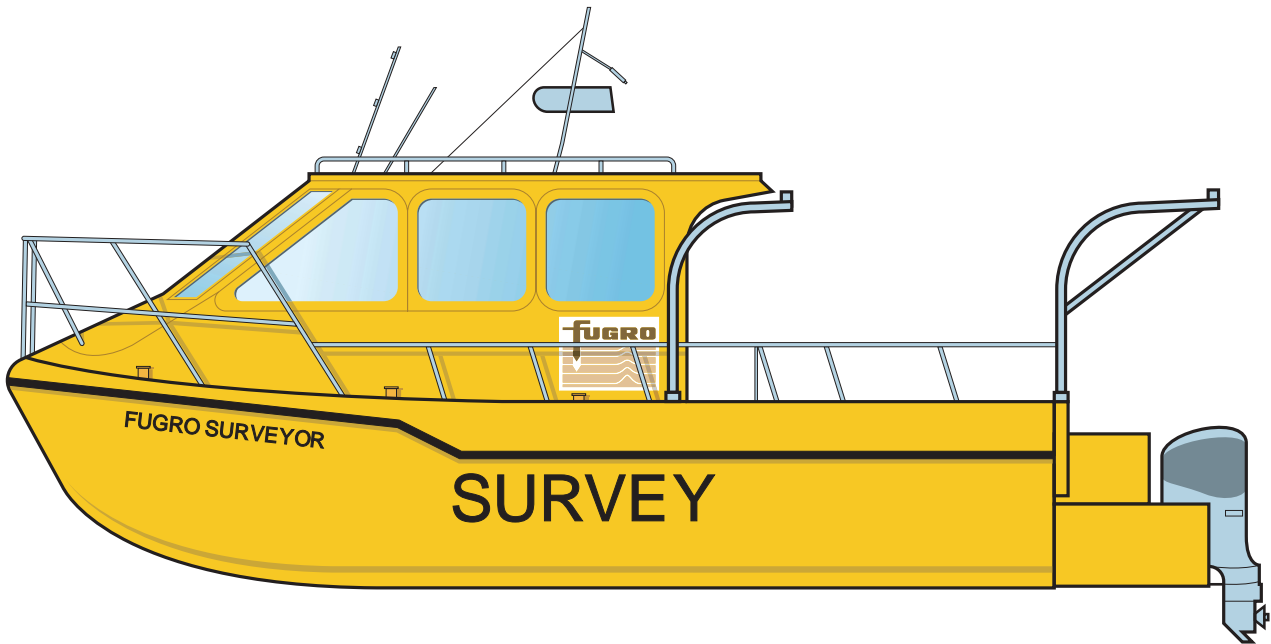
- 12 Channel GPS Receivers
- StarFix.SPOT and IAL A DGPS Corrections
- StarFix.NAV Software Suite
- Knudsen 320M 21 0/ 33Khz Echo Sounder
- Dual KVH1 000 Compasses

Survey Capabilities

- Geophysical Site Surveys
- Cable and Pipeline Route Surveys
- Cable and Pipeline Inspections
- Cable Location and DOB Surveys
- Geotechnical Surveys
- Multibeam Bathymetry
- ROV Surveys (Eyeball)
- Spillage Monitoring
- Oceanographic and Environmental

General Specifications

- Conforms to all MCA safety and operational regulations
- Road transportable
- Capable of carrying four personnel



Fugro Survey Ltd
 Morton Peto Road
 Harfreys Industrial Estate
 Great Yarmouth
 Norfolk, UK
 NR31 0LT

Tel: +44 (0) 1493 440 320
 Fax: +44 (0) 1493 440 319
 email: info@fugrosurvey.co.uk

Fugro Survey Ltd
 Denmore Road
 Bridge of Don
 Aberdeen
 Scotland, UK
 AB23 8JW

Tel: +44 (0) 1224 257500 / 600
 Fax: +44 (0) 1224 853900
 email: info@fugrosurvey.co.uk



Fugro Survey Ltd is part of the Fugro Group of companies with around 8000 permanent employees and 250 Offices in 60 countries

www.fugro.com

Fugro Survey Ltd reserve the right without notification or obligation to change, modify and update designs and specifications as part of our continuous improvement programme.